

**BFMC Cancer Committee
Members 2008**

John McCann, MD
Medical Oncology/Chairman

Charles Casale, MD
Gastroenterology

Stephen Fox, MD
Surgery/Cancer Liaison

Kathleen McGraw, MD
Hospital Medicine

Wilson Mertens, MD
Director
Baystate Regional Cancer Program

Howard Natenshon, MD
Radiology

Thomas Napier, MD*
Radiation Oncology
Baystate Medical Center

Michael Yunes, MD*
Radiation Oncology
Baystate Medical Center

Mary Zakhary, MD
Pathology

Reanne Burke, MSN, OCN
Regional Nurse Manager
Baystate Regional Cancer Program

Maureen Casey, CTR
Cancer Registrar

Carol Marchefka, RPh
Pharmacy

Cathy Rousseau, MS
Director, Cancer Services
Baystate Regional Cancer Program

Kailen Ryan, RN, OCN
BFMC Oncology Program Supervisor

Victoria Sutton, LCSW
Oncology Social Work

Nancy Woodring, RN
Performance Improvement

Kelly Woods
American Cancer Society Representative

* attend as needed

**BFMC's Cancer Program Awarded Approval with Commendations
by American College of Surgeons**

The Baystate Regional Cancer Program (BRCP) at Baystate Franklin Medical Center (BFMC) was awarded approval with commendations in 2008 by the American College of Surgeons (ACoS) Commission on Cancer (CoC). Only one in four hospitals treating cancer patients receives this special honor. The CoC executes a rigorous approval process, ensuring patients that when they enter approved programs such as the one at BFMC, they are getting the highest quality comprehensive cancer care available. This includes offering access to a range of therapies and treatments, as well as access to clinical trials and state-of-the-art equipment. For instance, patients who choose BFMC are now offered digital mammography, which affords them the highest quality of breast imaging for the prevention and detection of breast cancer.

The CoC also emphasizes a multi-specialty, team approach to providing cancer care. The interdisciplinary cancer care team at BFMC includes medical staff from Surgery, Oncology, Radiology, Pathology, and Radiation Oncology, as well as Oncology Certified nurses and Oncology Social Work.

Digital Mammography at Baystate Franklin Medical Center

The addition of a new Selenia™ digital mammography system from Hologic® has enhanced the breast care offerings for patients at BFMC. Digital mammography allows the radiologists to view the x-ray image more closely, zeroing in on suspicious or concerning areas, enabling the radiologists to make immediate decisions about additional images. Digital mammography takes less than half the time of the traditional film-based exams and the radiologist may review the images while the patient is still in the examination room.

In conjunction with the digital mammography units, Baystate Franklin Medical Center also offers Computer Aided Detection (CAD). CAD provides a "second" read of the mammogram by a computer. Patient results are immediately available to the referring physician via Baystate's Picture Archiving System (PACS).

Baystate  Regional Cancer Program

BAYSTATE FRANKLIN MEDICAL CENTER

164 High Street | Greenfield, MA 01301 | 413-773-2251

Introduction

The Baystate Regional Cancer Program (BRCP) at Baystate Franklin Medical Center (BFMC) is pleased to share with you our accomplishments from 2008. In this report, you will read about:

- Awards for the BFMC Oncology Program
- Patient Satisfaction
- Community Outreach
- Statistical tracking of cancer incidence
- Quality Assurance

Oncology Nursing

In 2007, we proudly announced that 100% of our permanent nursing staff was Oncology Certified (OCN®). Research has shown that certified nurses feel more competent in their skills, experience more self confidence in their practice, and experience greater satisfaction in their profession.¹ Research has also shown that patients value certification when they choose their healthcare providers². BFMC Oncology understands the benefits of certification for both patients and nurses. All of the eligible nurses in the clinic are certified, and new nurses are actively engaged in completing the required preparations to become certified.

The Oncology Nurses are actively involved in identifying performance improvement projects in the unit and in other ongoing enhancements of patient care. The group regularly meets in the unit based Oncology Clinical Practice Committee. In 2008 the group instituted a Journal Club, in which nurses present to each other short in-services about articles they have read in the current oncology nursing literature.

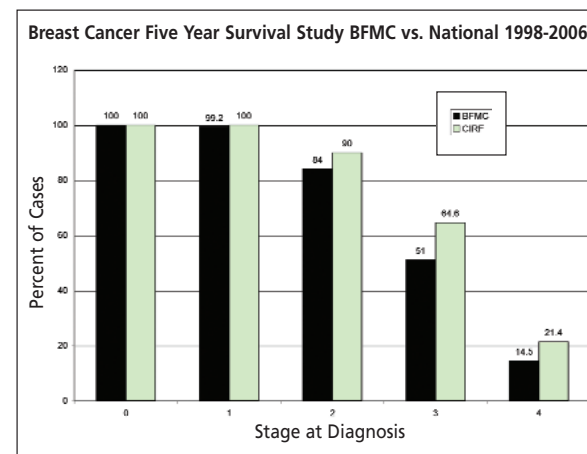
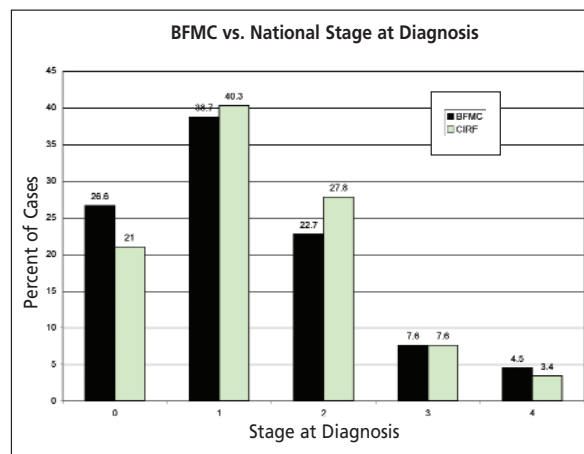
¹ Cary, AH. Certified registered nurses: results of the study of the certified workforce. American Journal of Nursing, January, 2001.

² Harris Interactive Inc. American Association of Critical Care Nurses Survey. November, 2002.

Breast Cancer Five-Year Survival Study

The BFMC Cancer Registry accessioned 489 breast cancer cases between 1998 and 2006. The earliest stage cancers (Stage 0 and Stage 1) represented 65% of cases at BFMC vs. 61% nationally. Stage 0 cases were 27% of all BFMC breast cancer cases vs. 21% nationally. This indicates that screening programs at BFMC are identifying early stage breast cancer at a comparable or better rate than national averages.

There were a greater percentage of elderly (age >70) patients diagnosed at BFMC (36%) compared to the national average of elderly individuals diagnosed (28%). Despite this somewhat older population, treatment modalities mirrored national treatment averages with equivalent numbers of patients receiving surgery, radiation, chemotherapy, and hormonal therapy. Survival for early stage breast cancers was nearly 100%, which is expected and equivalent to national averages. Survival of late stage (Stage III and Stage IV) breast cancers were slightly less than national averages which was a change from our registry data from three years ago. Given the smaller number of patients with more advanced disease and the variation in survival over time this difference is likely not statistically significant.



Outreach and Community Partners:

BFMC Oncology offers and participates in outreach efforts throughout the year. Prevention and screening efforts continued in 2008. For example, the annual free Skin Cancer Screening with Joel Gordon, MD, was held in May, with 100% of available appointments filled. Department staff attended the Greenfield High School health fair and provided a wealth of skin cancer prevention, testicular cancer screening, cervical cancer prevention, and lung cancer prevention/smoking cessation materials to high school students. The department also works with the Women's Health Network and Men's Health Coalition to assist community members with free breast cancer, prostate cancer, and colon cancer screenings. The department also offers the Spirit of the Written Word workshops in partnership with Forest Moon, a non profit organization dedicated to providing free retreats and workshops to those touched by cancer.

In addition to the outreach activities Oncology coordinates, including monthly support groups, the annual Quinnetucket Boat Trip to Celebrate Life, the Sacred Gathering at the Relay for Life, and the Annual Evening for Women, two new outreach programs were launched in 2008. Below is a brief description of each of them.

The Breast Cancer Wellness Program Comes to Franklin County:

Funded by Rays of Hope, this is an eight-week session for survivors of breast cancer focusing on promoting healthy choices and enhancing overall well being. Christine Carpenter, the Wellness Program Coordinator for the Baystate Regional Cancer Program, conducted this eight-week class for BFMC Oncology breast cancer survivors in May 2008. Many community businesses generously supported the effort, including Hope and Olive Restaurant, The Body Shoppe, and Deerfield Academy. This program was well received and participants were overwhelmingly positive when surveyed about the experience. Another eight-week session is planned for the spring of 2009.

American Cancer Society Days Provide Needed Resources:

Early in 2008, the Cancer Committee, in discussion about outreach activities, agreed that enhancing knowledge of cancer-related resources for patients and their families was a high priority. In keeping with this plan, BFMC Oncology invited American Cancer Society representative Kelly Woods to pilot "ACS Days." Every other month Kelly set-up a table outside the Oncology waiting room with resource information, including free books about the cancer journey, organizational tools for the newly diagnosed, and information on countless other free support services and resources available through ACS. Patients have commented that they have learned about valuable available resources which they had not been previously aware of.

Awards

In 2008, BFMC Oncology was ranked again in the top 10 percent of similar units nationally for patient satisfaction and patient centered care. The unit uses feedback from the patient satisfaction surveys to enhance the processes that we use for delivery of high quality care. In the past Oncology has used this information to make changes in the patient registration process, increasing the ease with which patients registered for their appointments. In 2009, the focus will be on enhancing patient privacy in our clinic.

Cancer Registry Report–2007

In 2007 there were 217 cancer cases accessioned into the Cancer Registry at Baystate Franklin Medical Center. Of that number 194 were diagnosed or received all or part of their care at BFMC. This was a slight increase from 2006 in which 209 cancer cases were accessioned. There were 95 males and 122 females. The breast continues to be the most common site with a total of 54 cases or 25% of the total cancer cases accessioned. The second most common site was the lung, with a total of 40 cases, or 18% of all cancers for the year. The Cancer Committee, upon review of the statistics, expressed no concerns. The decline in breast cancer cases for 2007 was not considered significant as it remains within the range of 50-60, consistent with results from the last several years.

The registry maintains a lifetime follow-up for all patients. The current lifetime follow up rate of 94% continues to be above the required 80%. The current five-year rate is 98%, which is above the 90% requirement. Follow-up is obtained from letters to physicians and other health care providers, patient contact letters, and Social Security Death Index.

The registry reports all cases accessioned at Baystate Franklin Medical Center to the Massachusetts Cancer Registry and the National Cancer Base as required by state law.

BAYSTATE FRANKLIN MEDICAL CENTER																
FREQUENCY REPORT SUMMARY BY SITE/SEX/CLASS/STATUS/STAGE																
ICD-0-3 SITE FORMAT																
ALL 2007 CASES																
PRIMARY SITE	TOTAL	PERC	SEX		CLASS OF ANALY	CASE N-ANALY	ALIVE	EXP	AJCC STAGE/ANALYTIC ONLY							
			M	F					'00	'01	'02	'03	'04	99	88	B/B
ESOPHAGUS	2	0.9	2	0	2	0	0	2	0	0	0	0	1	1	0	0
STOMACH	9	4.1	5	4	8	1	5	4	0	3	0	2	2	1	0	0
SMALL INTESTINE	1	0.5	0	1	1	0	1	0	0	0	0	1	0	0	0	0
COLON	27	12.4	16	11	27	0	21	6	1	1	11	8	1	4	1	0
RECTOSIGMOID JCT	2	0.9	1	1	1	1	2	0	0	0	0	1	0	0	0	0
RECTUM	6	2.8	3	3	6	0	5	1	0	2	2	0	2	0	0	0
LIVER / BILE DUCTS	1	0.5	1	0	1	0	0	1	0	0	0	1	0	0	0	0
GALLBLADDER	1	0.5	0	1	0	1	0	1	0	0	0	0	0	0	0	0
OTH & UNSPEC PTS OF BILL	1	0.5	1	0	0	1	0	1	0	0	0	0	0	0	0	0
PANCREAS	3	1.4	2	1	3	0	1	2	0	0	0	1	2	0	0	0
LUNG	40	18.4	18	22	40	0	12	28	0	5	2	10	20	3	0	0
PLEURA	2	0.9	2	0	2	0	2	0	0	1	0	0	1	0	0	0
HEMATOLOGIC	4	1.8	2	2	4	0	3	1	0	0	0	0	0	0	4	0
SKIN	6	2.8	4	2	6	0	5	1	3	2	0	0	0	1	0	0
BREAST	54	24.9	0	54	54	0	54	0	7	27	15	5	0	0	0	0
VULVA	1	0.5	0	1	1	0	1	0	1	0	0	0	0	0	0	0
CORPUS UTERI	8	3.7	0	8	8	0	5	3	0	2	0	1	1	2	2	0
OVARY	5	2.3	0	5	4	1	4	1	0	1	1	0	2	0	0	0
PROSTATE GLAND	21	9.7	21	0	5	16	18	3	0	0	0	0	5	0	0	0
KIDNEY	3	1.4	2	1	3	0	2	1	0	1	0	1	0	1	0	0
BLADDER	10	4.6	7	3	9	1	8	2	3	3	1	0	2	0	0	0
BRAIN	1	0.5	1	0	1	0	0	1	0	1	0	0	0	0	0	0
THYROID GLAND	1	0.5	1	0	1	0	1	0	0	0	0	0	1	0	0	0
ADRENAL GLAND	1	0.5	1	0	1	0	1	0	0	0	0	0	0	0	1	0
LYMPH NODES	4	1.8	3	1	3	1	4	0	0	1	0	0	2	0	0	0
UNKNOWN PRIMARY	3	1.4	2	1	3	0	0	3	0	0	0	0	0	0	3	0
TOTAL	217		95		194		155		15		32		42		11	
		100		122		23		62		50		31		13		0

Oncology Department Staff

Medical Director Hematology/Oncology
John McCann, MD

Hematology/Oncology
Deborah Katz, MD

Radiation Oncology
Thomas Napier, MD
Michael Yunes, MD

Program Supervisor
Kaileen Ryan, RN, OCN

Registered Nurses
Linda Caouette, RN, BSN, OCN
Sarah Cyhowski, RN, BSN
Jessica Gould, RN, BSN, OCN
Kathy Kippenberger, RN, BSN, OCN
William Maxam, RN, BSN, OCN
Joy Pelc, RN, OCN

Certified Nursing Assistant
Calista Crowell, CNA

Oncology Social Worker
Vicki Sutton, LCSW

Cancer Registrar
Maureen Casey, CTR

Registration Clerk
Judith Scott

Health Unit Clerks
Carol Griswold
Carol Tobey
Eva Zajkowski