

Employee Secure Website Update

This is the **NEW LOOK** to our secure website. From now on, when you go to <https://secure.bhs.org>, this is what you will see. **Log-in** with your **Network User Name** and **Password** as you always have.



Baystate Health
Welcome to the Baystate Health Physician and Employee Portal



User name:

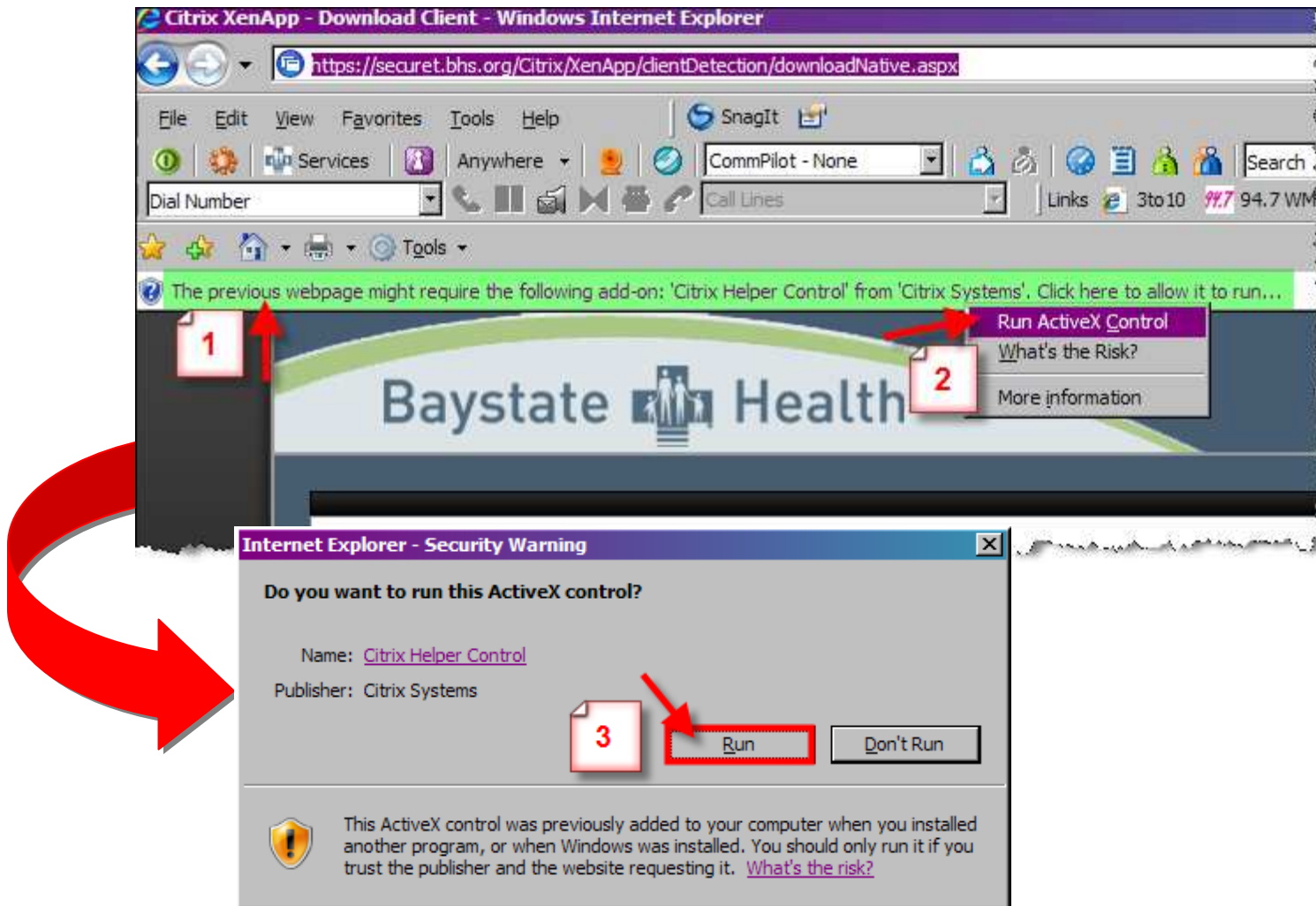
Password:

Please log in with your BH network user ID and password

If you do not know your login information or are experiencing problems, please contact the Help Desk at 413-794-3000, Mon. – Fri. 7:30am – 5:00pm.

The first time you connect, you may get prompted to install the **Citrix Helper Control** add-on from **Citrix Systems**:

1. Right-click on the message bar
2. Select **Run ActiveX Control**
3. Click on **Run**



The list of folders appears, but defaults to **List** view. Click on **Icons** in the **Select View** field to change your view, if desired. Click on the desired folder/icon.

Baystate Health

Baystate Health Applications

Logged on as: **en08985** Log Off

✔ An appropriate client is available on your computer.

Welcome to your personalized view of the BH Portal Application Access. The Applications box contains icons for the applications that you can use. Click an icon to launch an application. Click Refresh to view the latest applications. Click Settings to change your settings. Click a folder icon to display its contents. If you have problems using an application, please contact the Help Desk at 413-794-3000.

Applications

Main

Select view: List
Icons
List
Tree
Groups

- Baystate Health
- Cerner Applications BUILD...
- Cerner Applications HATES...
- Cerner Applications produ...
- Cerner Applications Test ...
- CIS IBM testing
- Provision CIS Test
- BHS E-Workplace
- ESA Documents To Sign
- Cerner Applications BDS D...
- Cerner Applications CISNE...
- Cerner Applications Mock ...
- Cerner Applications Produ...
- Cerner Applications WHIT ...
- CIS Server Image Update
- System Administration Too...
- CIS
- IBM RADNET

Change Password | Problem Connecting?

If you have problems using an application, please contact the Help Desk at 413-794-3000.

1. Click on the desired icon to view the application(s).
2. Please note, you can click on **Log Off** on any screen to exit.

